

# Edward B. O'REILLY

## FROM CONCEPT TO COMPLETION

COOLING • HEATING • VENTILATION • HUMIDIFYING  
DEHUMIDIFYING • REFRIGERATION • MAKE-UP AIR UNITS  
PROCESSING • PRODUCT TEMPERATURE & HUMIDITY CONTROL  
DATA PROCESSING ROOM • WHITE ROOM • CERTIFIED MAINTENANCE



## Specialists in Air Conditioning & Refrigeration

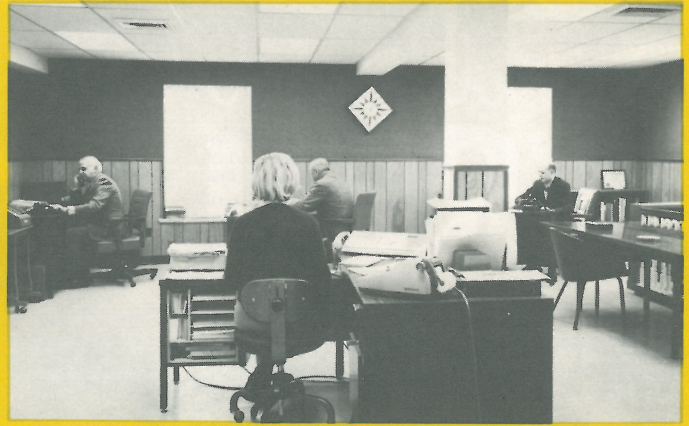
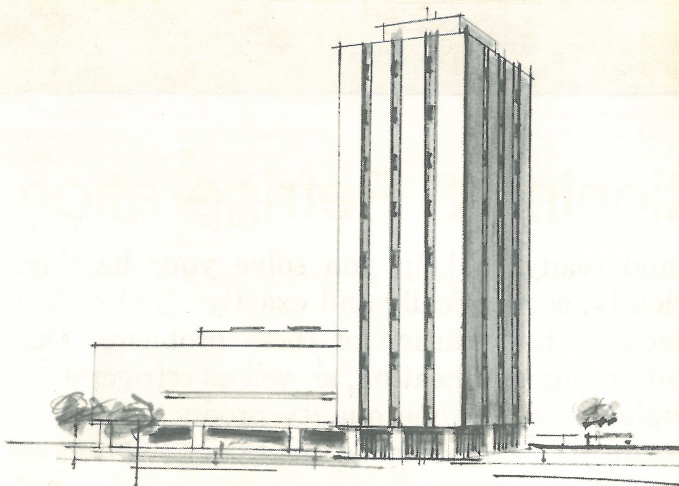
The **Edward B. O'Reilly & Associates, Inc.** stand ready to help you solve your heating, cooling, temperature and humidity problems efficiently, economically and exactly. ☐ Our firm has worked with many owners and their architects in the solution of these problems. Our vast experience, in designing and installing air conditioning and heating, as well as refrigeration systems, is at your disposal. This know-how, coupled with the fine quality products that we use and recommend, is a combination that will assure your complete satisfaction. ☐ Our sales and planning departments will inspect and price out any type of commercial or industrial air conditioning, refrigeration, or heating requirements at no obligation to you. ☐ Our service corporation offers complete preventive maintenance service assuring a trouble-free system.



# Concept to Completion from Edward B. O'Reilly

**Concept to Completion** . . . Only 3 words are an excellent way of saying from start to finish, so let's start with a need, your need for controlled indoor climate or controlled temperatures for refrigeration purposes.

Call anyone in our sales engineering department and discuss with them the nature of your temperature problem. They will work with you, your engineers, your contractor, or architect to create an efficient, economical solution to your problem. In addition they will present to you their ideas on a design of a system for your evaluation and study. In the meantime, our installation and maintenance department is advised of the equipment selected so that they may be ready to make the final installation quickly and efficiently, thus completing all the steps in our "Concept to Completion" program. But we don't stop here—we service and maintain what we sell.



**Sales Engineering** . . . A complete and highly trained staff of air conditioning, refrigeration, and heating sales engineers stand ready to analyze your needs and to custom-design an efficient, economical solution to it . . . This kind of careful, prior planning is vital for an efficient, economical and dependable system.



**Designing** . . . Trained draftsmen convert the ideas created by the sales engineers into practical plans on paper. Weights and sizes are kept to a minimum. This kind of precise planning often saves many feet of valuable floor space and helps reduce installation and overall costs.

## YORK AIR CONDITIONED BY O'REILLY



GIMBELS DISTRIBUTING CENTER

Bensalem, Pa.

See page 4 for a list of satisfied customers



## Service and Preventive Maintenance . . .

After the initial start up of a new installation, the customer receives a one year O'Reilly Certified Maintenance Contract, at no extra cost, from E. B. O'Reilly Servicing Corporation (a wholly owned subsidiary of the same address and telephone number).

An O'Reilly Certified Maintenance Contract assures a trouble-free system for one year (renewable on a yearly basis for a minimal cost) and includes these 15 benefits:

1. Emergency service available 24 hours.
2. Start up and shut down equipment seasonally.
3. Four regularly scheduled inspections (our minimum contract).
4. Paint tower or air cooled condenser.
5. Steam clean air cooled condenser.
6. Chemically clean coils and condensate lines.
7. Chemically scale clean water cooled condensers.
8. Check carefully for refrigerant leaks.
9. Adjust tension on all belts.
10. Check electrical components.
11. Check for air leakage.
12. Lubricate all moving parts.
13. Check all operating temperatures and pressures: adjustments as requested.
14. Drain water from all parts of system likely to freeze during winter.
15. Furnish and install all parts under manufacturers warranty.

The personnel of the E. B. O'Reilly Servicing Corporation are experienced, factory trained specialists in maintaining and keeping air conditioning and refrigeration systems operating with an absolute minimum of shut-down time.

Over 700 satisfied customers subscribe to our preventive maintenance service contract. Their specialized equipment ranges from 2 ton units to over 200 ton systems. Our records show that the "down time" of their systems is reduced by more than 75%, which can only be attributed to constant, preventive maintenance.

For a Survey of Your Equipment and An Estimate of Cost, Phone CHestnut Hill 2-8100. Remember—Equipment Needs Care Not Just Repair!

## A fleet of two-way radio equipped trucks to serve you

In keeping with our policy of constantly improving our service to our customers you will be pleased to know we installed the latest two-way radio communication equipment on our fleet of 20 service vehicles.



## Planned and completed Maintenance . . .

The service control department schedules routes, and dispatches servicemen and trucks to answer all calls quickly and efficiently. This department is in constant touch with the entire fleet of trucks, which stand ready to answer any emergency service call 24 hours a day.



## We Service and Maintain What We Sell

O'Reilly's servicing trucks bring tools, testing instruments and specialized equipment to your Plant. Having these tools available reduces costs per service call and keeps "call backs" and "plant down time" to a minimum.

Membership in the following: Chamber of Commerce of Greater Philadelphia. Sub-contractors Association of Delaware Valley. Servicing Contractors Association. National Environmental Systems Contractors Association.



# A few of the many important corporations in the Delaware Valley who are satisfied customers of Edward B. O'Reilly & Associates, Inc.

## FOOD & KINDRED PRODUCTS

Automatic Retailers of America  
Charles Jacquin  
National Molasses Co.

## RESTAURANTS

Calico Kitchen  
Crane's Old English Tavern  
Open Hearth  
Tankard Inn  
Copper Door

## TEXTILE MILLS PRODUCTS

Clover Knitting Mills  
Somerset Knitting Mills  
Strong Wear Hosiery  
Spur Knitting Mills  
Tru-Knit Industries

## APPAREL MANUFACTURING

Robert Bruce, Inc.  
Eagle Shirt Company  
Sun Clothes, Inc.  
\*H. Freeman Sons  
Middishade

## PAPER & ALLIED PRODUCTS

Paper Manufacturers Co.  
Roosevelt Paper Company  
Scott Paper Co.

## PRINTING & ALLIED INDUSTRY

DuPont Photo Products Division  
National Decalcomania Corp.  
National Label Co.  
The Winchell Co.  
Union Mills Manufacturing Co.  
Sharp Corp.

## BUILDING & LOAN & FINANCE

Beneficial Finance  
Family Finance Co.  
Federal Loan Co.  
Liberty Federal Bank & Loan Assn.  
Ritter Finance Co.  
Scientific Resources  
\*Colonial Mortgage Co.  
Household Finance  
Home Unity Savings & Loan

## CHEMICALS & ALLIED PRODUCTS

Allied Chemical Co.  
Betz Laboratories, Inc.  
E.I. duPont deNemours & Co.  
National Drug Co.  
Pennwalt  
Rohm & Haas Co.  
Thiokol Chemical Corp.

## BANKS

First Pennsylvania Bank & Trust Co.  
Fidelity Bank & Trust Co.  
Frankford Trust Co.  
Philadelphia National Bank  
Girard Trust Bank  
Continental Bank & Trust Co.  
Central Penn National Bank  
\*Germantown Savings Bank

Bank & Trust Co. of Old York Road

## SCHOOLS

Germantown Academy  
Spring Garden College

## GENERAL CONTRACTORS

Catalytic Construction Co.  
Hughes Foulkrod Construction Co.  
Wm. F. Lotz & Co.  
Harry A. Pontz & Co.  
George K. Heebner  
Phila. N.E. Construction Co.  
J.J. White, Inc.

## HOSPITALS

Albert Einstein Medical Center  
Doctors Hospital  
Germantown Hospital  
Jefferson Medical College Hospital  
Pennsylvania Hospital  
Rolling Hill Hospital & Diagnostic Center  
Sacred Heart Hospital  
Veterans Administration Hospital  
All Saints Hospital

## ELECTRICAL

Aetna Electro Plating Co.  
American Electronics Laboratories, Inc.  
\*ESB Inc.

Leeds & Northrup  
I.T.E. Imperial Corp.  
Harry F. Ortlip Co.  
W.V. Pangborne & Co., Inc.

## METAL PRODUCTS

Dodge Steel Co.  
La France Precision Casting  
Milford Rivet & Machine  
Northern Metals Co., Inc.

## PETROLEUM

ARCO  
B.P. Oil Co.  
Gulf Oil Co.  
Socony Mobil Oil Co.  
Shell Chemical Co.

## RETAIL & CHAIN STORES

Father & Son Shoes  
Gimbels Distributing Center  
Robert Hall  
Hanover Shoes  
Irving's Men's Stores  
Marianne's Dress Shop  
Pep Boys, Inc.  
Sears Roebuck & Co.  
Strawbridge & Clothier  
Edison Brothers  
Thom McAn Shoes  
Jacob Reed's Sons  
Franklin Simons

## CHURCHES & SYNAGOGUES

Christ The King Church  
Germantown Jewish Center  
First Presbyterian Church  
Holy Savior  
St. Athanasius  
St. Demetrious  
St. Paul Lutheran

Woodland Presbyterian  
Salem Baptist Church  
North Penn Baptist Church  
Norristown Jewish Community Center

## AUTOMOTIVE

Bernicker Cadillac  
Courtesy Ford  
Matlack Co.  
Plachter-Serubo Cadillac  
Regester's Pontiac, Inc.

## MANAGEMENT-REAL ESTATE

Beneficial Management Co.  
The Henderson Group  
Bethlehem Pike Ind. Cen.  
Albert M. Greenfield  
Joseph J. & Reynold H. Greenberg

## MACHINERY

Link Belt Co.  
Precision Grinding Wheel Co., Inc.  
Proctor Silex Corp.  
Tele-Dynamics  
Perry Equipment Co.  
Ansley East Corp.

## MISCELLANEOUS

American Red Cross, S.E. Penna.  
Kohler Co.  
McCloskey-Grant Corp.  
H. Peristein  
Selas Corp.  
Montgomeryville Industrial Park  
(29 Buildings)  
Thomas & Betts  
York Hoover Corp.

## CLUBS

Aronimink Country Club  
Chester Valley Country Club  
Cosmopolitan Athletic Club  
Whitemarsh Valley Country Club  
Philadelphia Cricket Club  
Ashbourne Country Club

## SHOPPING CENTERS

Cedarbrook Mall  
Cherry Hill Mall  
Concord Mall  
Neshaminy Mall  
Plymouth Meeting Mall  
Echelon Mall  
Livingston Mall  
Woodhaven Mall  
Brunswick Square  
Cumberland Mall  
Oxford Valley Mall

## HOTELS

The Barclay  
George Washington Motor Lodges

## ELECTRONIC DATA PROCESSING

\*EDP Rooms  
\*Computer Hardware Co.  
\*ITEL  
\*Data Documents  
\*Data Preparation  
\*Instant Data  
\*Information, Interscience, Inc.—3i  
\*Huggins, Inc.

### EDWARD B. O'REILLY & ASSOCIATES, INC. QUALIFICATIONS

1. Specialist in Air Conditioning installations extending over 20 years.
2. Experience in, and know-how of the most efficient and economical local construction methods.
3. Staffed with qualified, experienced and dependable labor force.
4. Unquestionable credit rating. (A financial statement available)
5. Excellent working relationship with suppliers and manufacturers.
6. Proven local competitive capabilities.

Edward B.  
**O'REILLY**  
& ASSOCIATES, INC.

**YORK** DIVISION OF BORG-WARNER CORPORATION  
**BORG-WARNER**

30 W. HIGHLAND AVENUE PHILADELPHIA, PA. 19118 CHESTNUT HILL 2-8100

\* Installed and/or serving humidity and temperature control for EDP rooms.